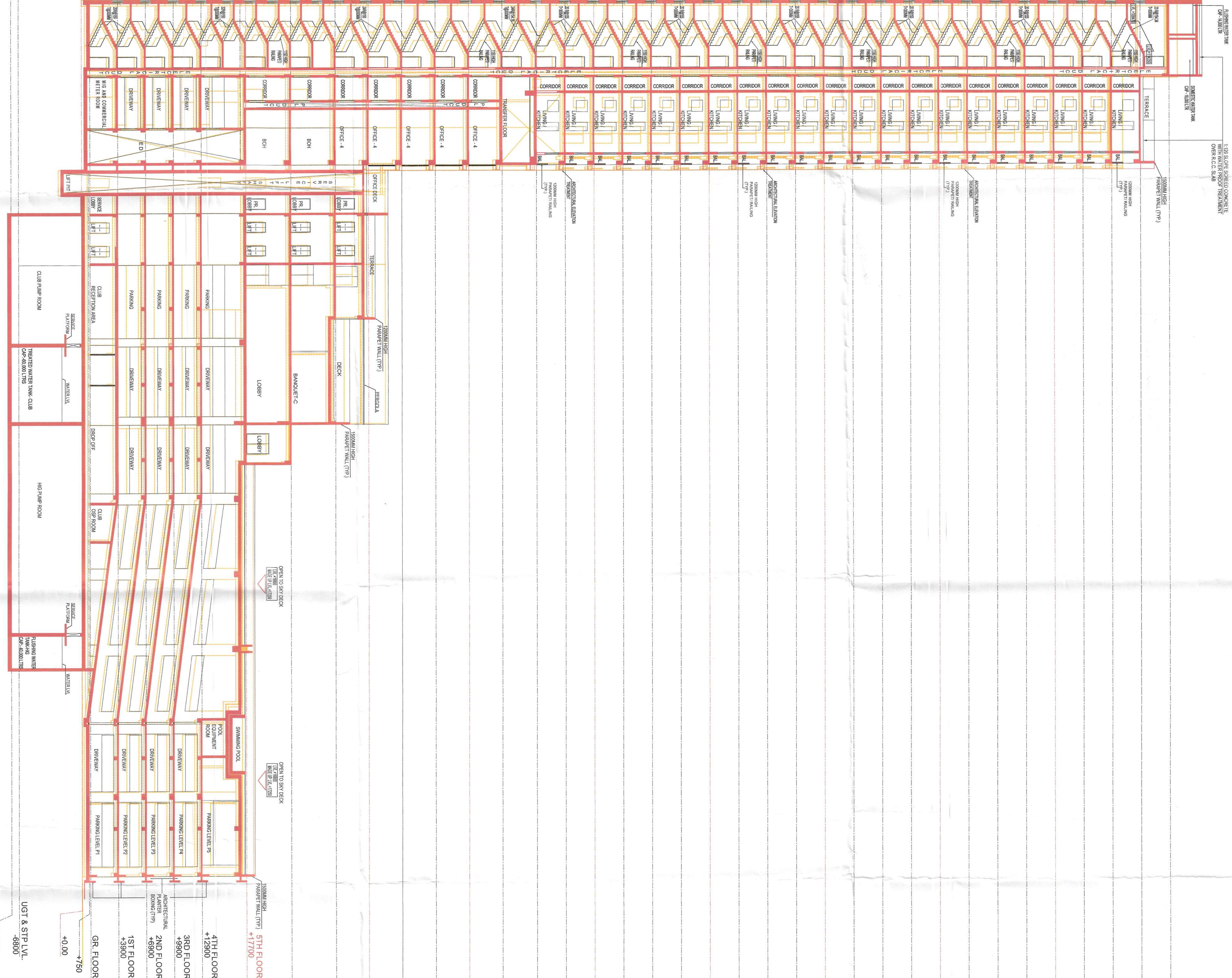


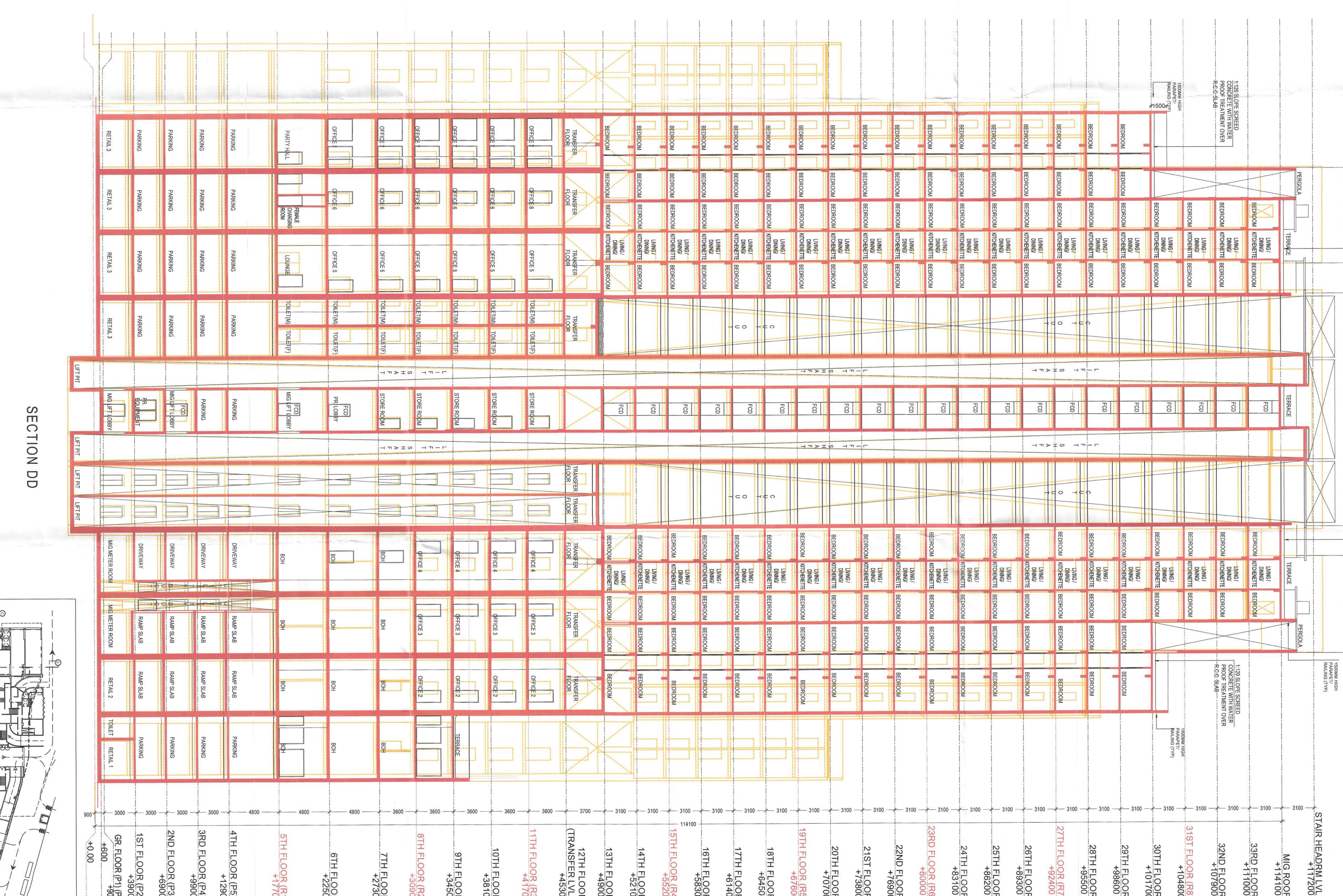
TOWER C (MIG)



SECTION CC

DECLARATION OF ARCHITECT, DECLARATION OF STRUCTURAL ENGINEER, DECLARATION OF STRUCTURAL REVIEWER, DECLARATION OF GEO TECHNICAL ENGINEER, DECLARATION OF OWNER

TOWER C (MIG)



SECTION DD

DECLARATION OF ARCHITECT, DECLARATION OF STRUCTURAL ENGINEER, DECLARATION OF STRUCTURAL REVIEWER, DECLARATION OF GEO TECHNICAL ENGINEER, DECLARATION OF OWNER

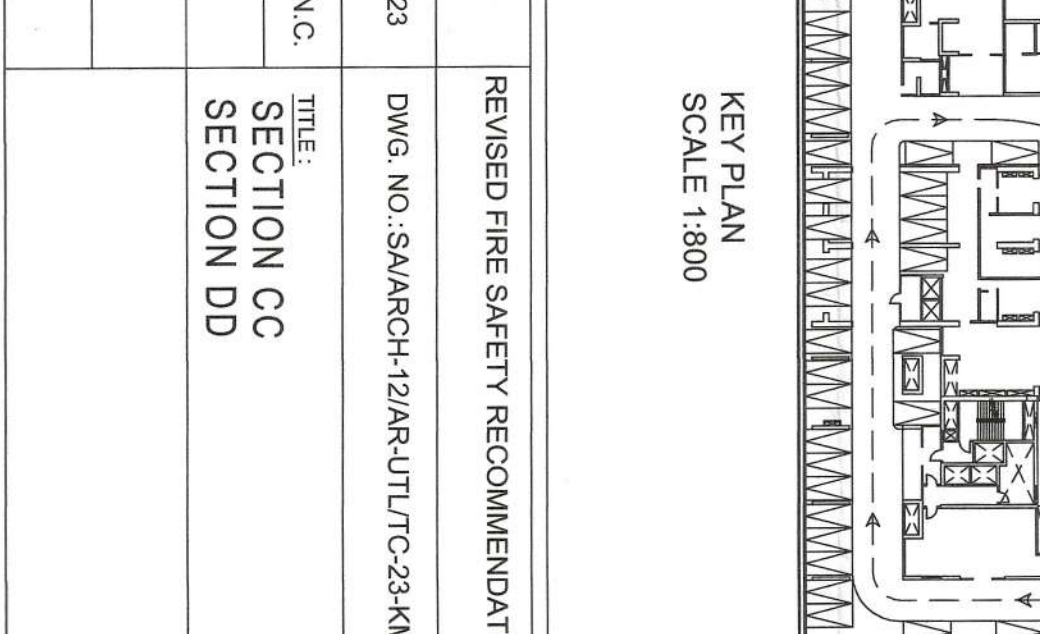


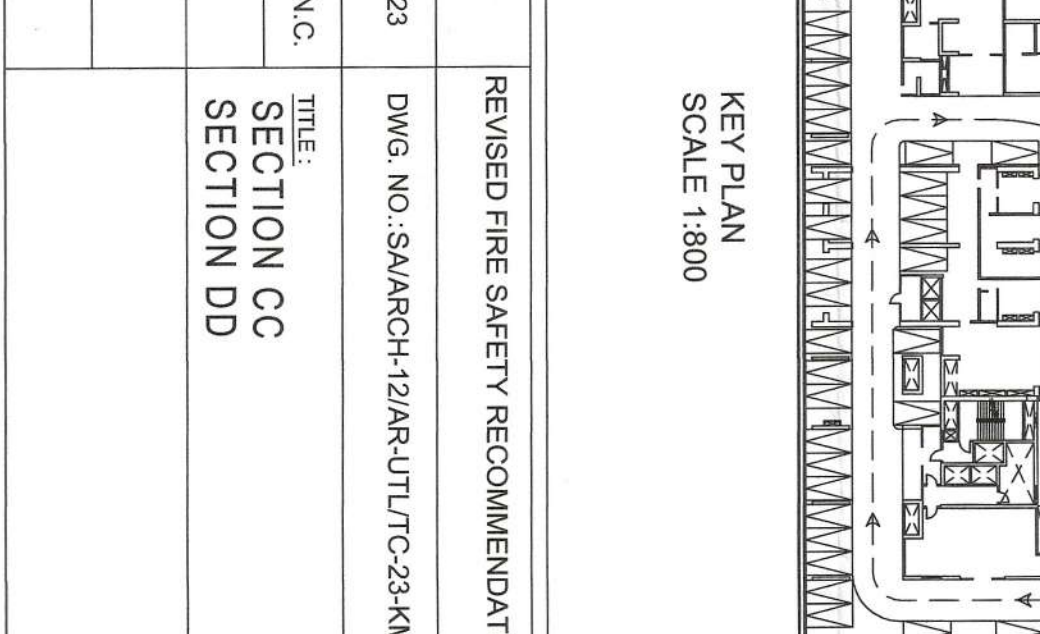
Table with 4 columns: OWNER, DEVELOPER, ARCHITECT, and SUKANYA & ASSOCIATES.

Table with 4 columns: SCALE, DATE, DRAWN BY, CHECKED BY, REVISION, and REVISED PER SAFETY RECOMMENDATION.

DECLARATION OF ARCHITECT, DECLARATION OF STRUCTURAL ENGINEER, DECLARATION OF STRUCTURAL REVIEWER, DECLARATION OF GEO TECHNICAL ENGINEER, DECLARATION OF OWNER

Table with 4 columns: OWNER, DEVELOPER, ARCHITECT, and SUKANYA & ASSOCIATES.

Table with 4 columns: SCALE, DATE, DRAWN BY, CHECKED BY, REVISION, and REVISED PER SAFETY RECOMMENDATION.



KOJATA MUNICIPAL CORPORATION
BILIMUNDA
P&MS APPROVED U/R 24 (D1 & D2) of
C&D (P&MS) RUL. ES. 2023/24
B. S. Form No. 2323 (201) 24
Date: 15.12.2023
Assistant Engineer E. S. Jadhav
B. No.: XI

51- 156 / XI / 23-24
This Form is to be returned to the
Assistant Engineer
And Forwarded to
B. S. Form No. 2323 (201) 24
Date: 15.12.2023
Section (C&D)
B. No.: XI

